

# Emergency Procedure in National Vital Object Area

**Rendi Tondi Pandapotan Batubara**

Manager of National Vital Object KST B. J. Habibie

**NATIONAL RESEARCH AND INNOVATION AGENCY**

**DIRECTOR OF LABORATORY MANAGEMENT, RESEARCH FACILITIES, AND SCIENCE AND TECHNOLOGY PARK**

**BRIN-JAEA FOLLOW-UP TRAINING COURSE ON RADIOLOGICAL EMERGENCY PREPAREDNESS AND RESPONSE**

**19 – 22 August 2025**



# PERSONAL INFORMATION

**NAME** : RENDI TONDI PANDAPOTAN BATUBARA  
**NIP** : 19980916 202012 1 004  
**DIRECTORATE-AGENCY**: DPLFRKST – BRIN  
**POSITION** : Manager of National Vital Object KST BJH  
**RESPONSINILITIES** : Security , Firefighting, management of hazardous and toxic waste, Emergency

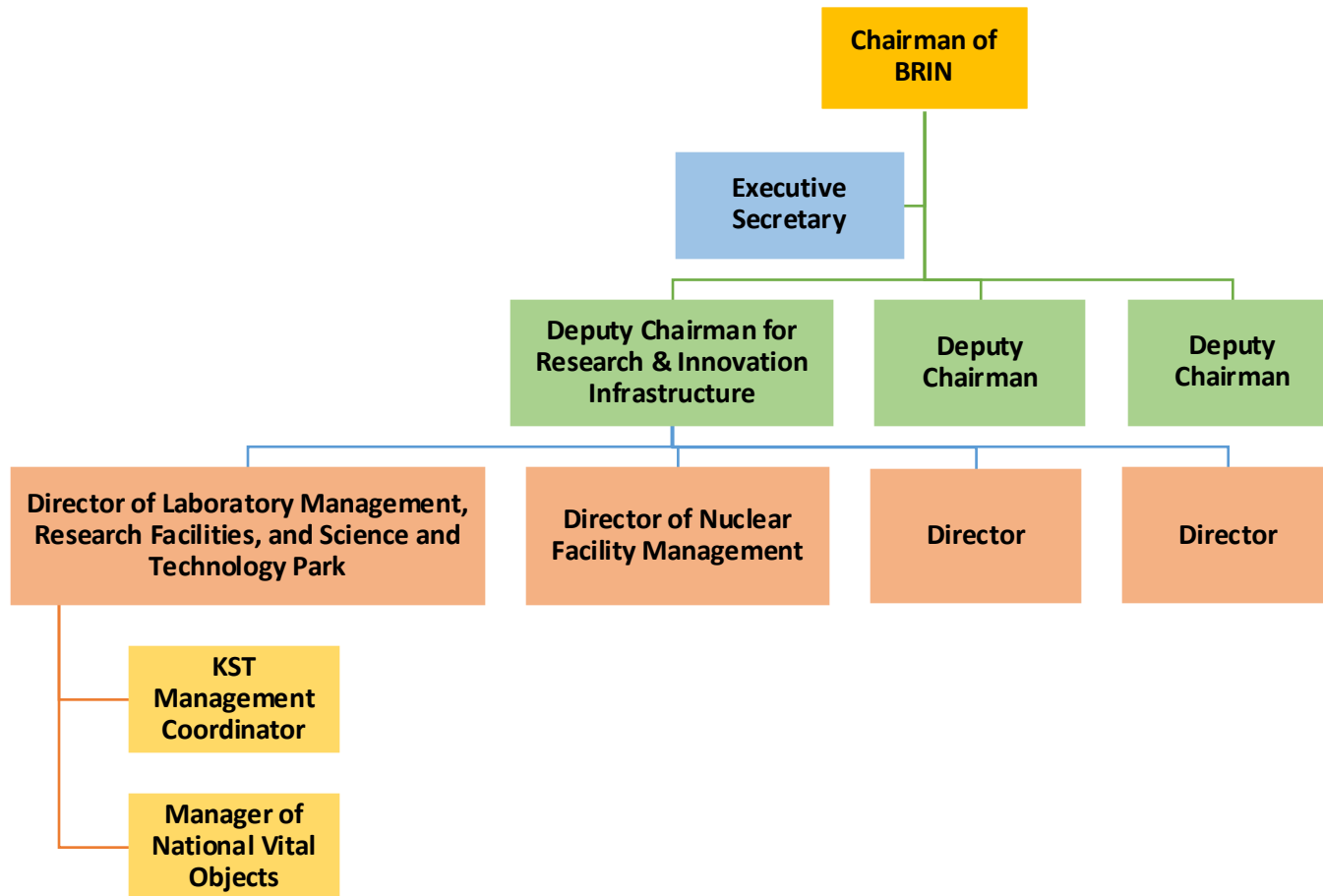


## Activities:

1. International Training Course on Developing Regulation for Nuclear Security, Vienna, Austria
2. International Training Course on Physical Protection System for Nuclear Material and Facility, Obninsk, Russia
3. International Training Course on Regulatory Function for Nuclear Security, Seibersdorf, Austria
4. International Training Course on Insider Threat Mitigation Using the Shapas 3D Model, Siebersdorf, Austria
5. International Conference on Nuclear Knowledge Management and Human Resource Development, Vienna, Austria
6. International Conference on Stakeholders Engagement for Nuclear Power Program, Vienna, Austria



# Organization Structure



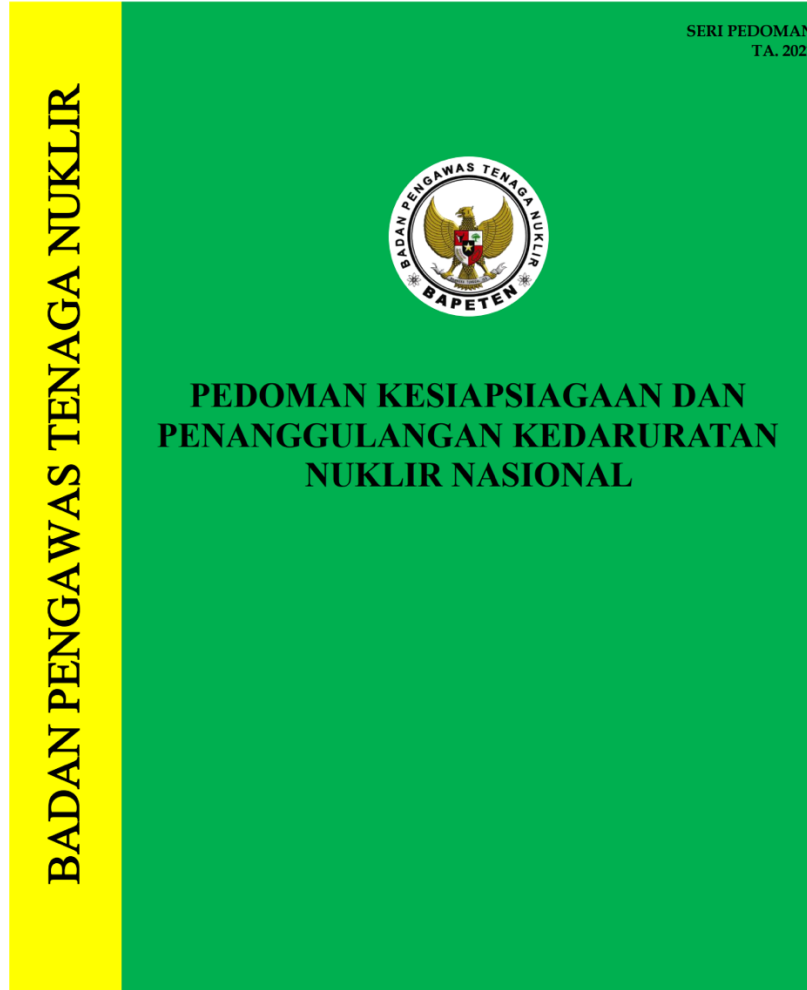
## Director of Laboratory Management, Research Facilities, and Science and Technology Park

### ❖ Function

- Implementation of functions and policies in the field of research and innovation infrastructure management including science and technology parks, laboratories, and research facilities
- Implementation of research and innovation infrastructure optimization



# Guidelines for National Nuclear Emergency Preparedness and Management



- The national emergency management system is regulated in Law No. 24 of 2007 concerning Disaster Management. The person responsible for implementing Disaster Management is the Government and Regional Government.
- The Disaster Management System in Indonesia is a comprehensive system covering all stages of the disaster cycle, starting from prevention, preparedness, emergency response to recovery.
- Presidential Instruction No.4 of 2019 mandates the Head of BNPB to carry out coordinating and implementing functions before and after a disaster, as well as command functions during non-natural disaster emergencies involving disease outbreaks, global pandemics, and nuclear, biological and chemical emergencies. which has domestic and global impacts
- Law No. 10 of 1997 stipulates the role of BAPETEN as a nuclear energy supervisory body and BRIN as an implementing and research body for the use of nuclear energy.
- Government Regulation No. 54 of 2012, if a Nuclear Emergency occurs at the installation level, the License Holder leads the implementation of the Nuclear Emergency response. In the event of a regional level nuclear emergency, the Head of BPBD leads the implementation of regional level nuclear emergency response, and in the event of a national level nuclear emergency, the Head of BNPB leads the implementation of national level nuclear emergency response activities.
- License holders are required to participate in the implementation of Nuclear Emergency Management caused by their installations/facilities/activities
- Statement of Nuclear Emergency status and termination of Nuclear Emergency at regional/national level based on recommendations from the Head of BAPETEN



## At the nuclear facility level,



operational  
protocols



communications



information  
dissemination

## The nuclear zone level



broader  
coordination



fostering inter-  
facility  
communication



joint response  
exercises



collaborative  
planning

## At the city and provincial level



ENGAGING WITH  
THE LOCAL  
GOVERNMENT



EMERGENCY  
SERVICES, AND



THE PUBLIC

Preparedness involves



STRUCTURED  
EVACUATION  
PLANS,



PUBLIC  
AWARENESS  
PROGRAMS, AND



TRANSPARENT  
COMMUNICATION





# Roles & Responsibilities (1)

- Nuclear energy users are required to have a Nuclear Emergency preparedness program/plan for installations/facilities/activities under their responsibility.
- Government Regulation No. 54 of 2012 mandates nuclear installation permit holders to develop a Nuclear Preparedness program.
- Government Regulation No. 33 of 2007 mandates license holders for radiation facilities and radioactive substances to develop a Nuclear Preparedness program.
- To ensure that the facility's Nuclear Preparedness program can be implemented, the two Government Regulations above require License Holders to organize Nuclear Emergency training and rehearsals at least 1 (one) time in 1 (one) year.



# Roles & Responsibilities (2)

1. Carry out efforts to overcome and prevent the escalation of emergency conditions;
2. Protect all workers and emergency response officers;
3. Report emergencies to the Head of BAPETEN;
4. Notify the emergency and its developments to the Regional Head Cq. Chief Executive of BPBD;
5. Suggestions/recommendations for protective actions for the community to the Regional Government, for example: recommendations for sheltering, evacuation, taking KI tablets, and prohibiting the consumption of local food that may be contaminated;
6. Provide warnings to the community around the emergency location;
7. Monitoring environmental radioactivity around emergency locations.



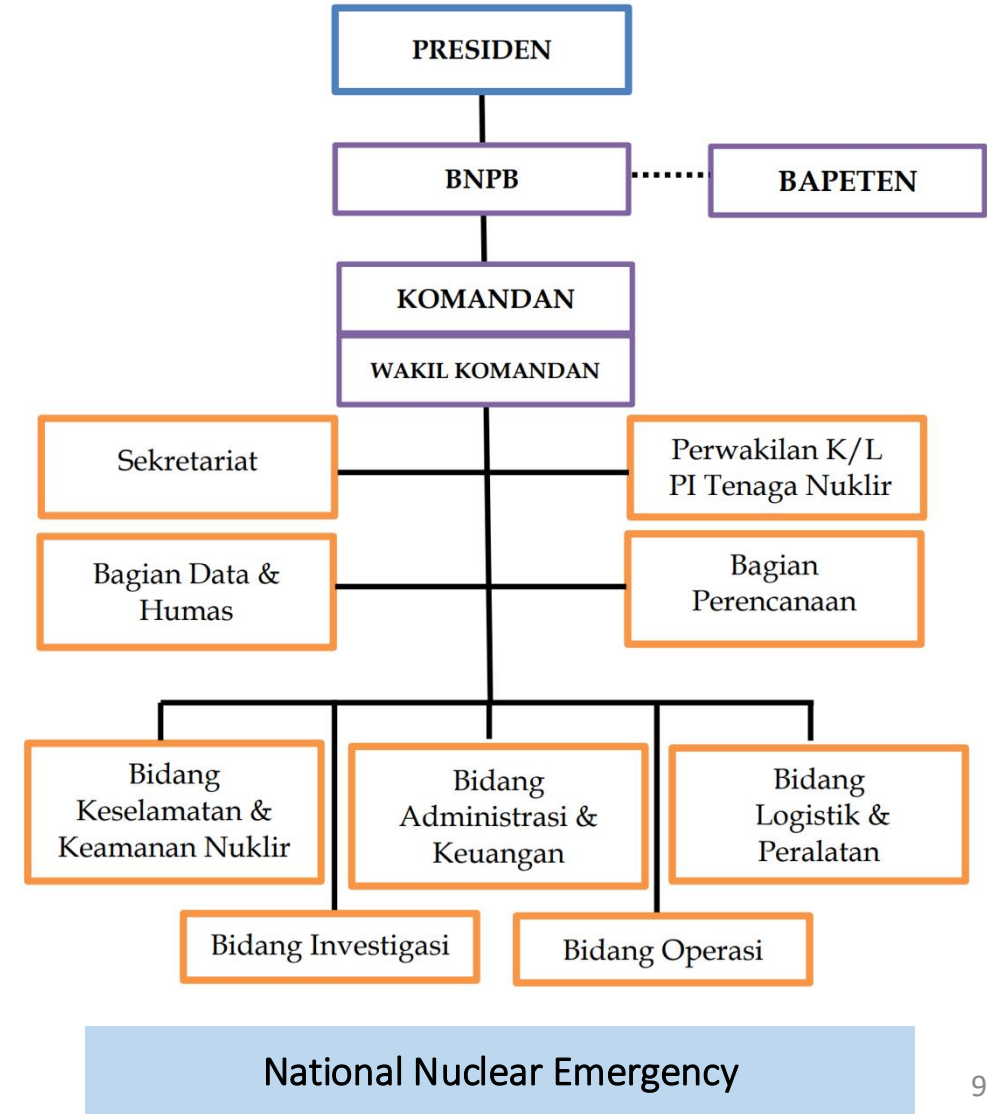
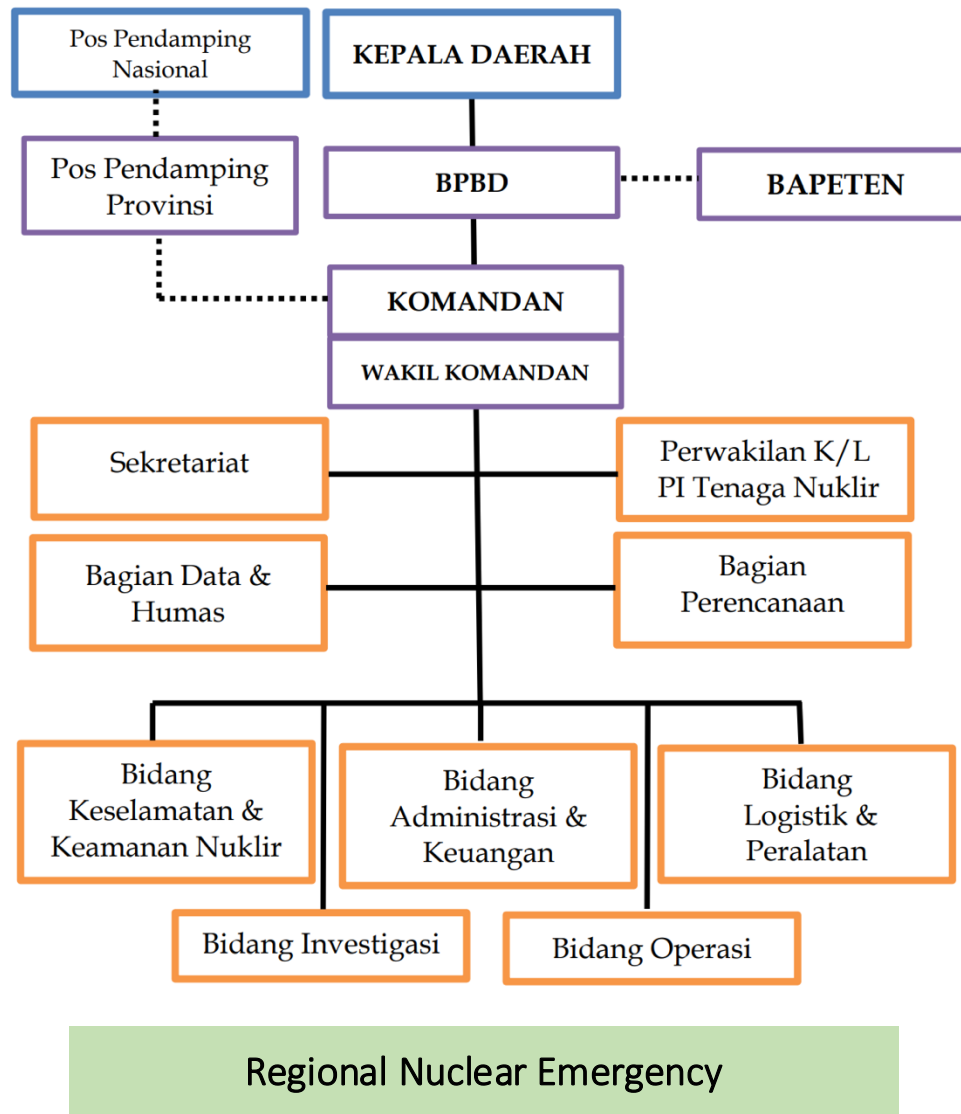
# Sectors Involved

Based on Chapter VII of the Head of BNPB Regulation No. 4 of 2008, handling emergency conditions at regional and national levels requires the role of various ministries/institutions and across sectors.

No	Sector	Agency
1	Government	Government (BNPB), Local Government (BPBD), National Counter Terrorism Agency (BNPT)
2	SAR and Security	National Search and Rescue Agency (BASARNAS), Indonesian National Army (TNI), National Police of the Republic of Indonesia (Polri)
3	Health	Ministry of Health (Kemenkes), Health Department (Dinkes), BASARNAS, TNI, Polri, Fire Department (Disdamkar), Referral Hospital, BRIN, Ministry of Agriculture (Kementan), National Development Planning Agency (BAPPENAS), Marine and Fisheries Ministry (KKP), National Agency of Drug and Food Control (BPOM)
4	Social	Ministry of Social Affairs (Kemensos), Social Affairs Department (Dinsos)
5	Public Works	Ministry of Public Works and Spatial Planning (PUPR), PUPR Department
6	Relations	Meteorology Climatology and Geophysics Council (BMKG), Ministry of Transportation (Kemenhub), Transportation Department (Dishub), National Committee On Transportation Safety (KNKT), Ministry of Communication and Information (Kominfo), Communication Information Department (Diskominfo)
7	Finance	Ministry of Finance (Kemenkeu)
8	Environment	Nuclear Energy Regulatory Agency (BAPETEN), BRIN, Permit Holder, BMKG, Ministry of Environment and Forestry (KLHK)
9	Research and Higher Education Institute	College, BRIN



# Emergency Command Post Organizational Structure





# Identify Organization of the Nuclear Emergency Post

No	Section/Field	Regional Nuclear Emergency	National Nuclear Emergency
1	Data and Public Relations	BPBD, BAPETEN, Diskominfo	BNPB, BAPETEN, Kominfo
2	Planning	BPBD, BAPETEN, BRIN, BMKG, BAPPEDA	BNPB, BAPETEN, BRIN, BMKG, BAPPENAS
3	Nuclear Safety and Security	TNI (PusZiAD-Nubika), Polri (KBR, Polwil), BAPETEN, BRIN (Radiology Reviewer), BMKG, BNPT	TNI (PusZiAD-Nubika), Polri (KBR, Polwil), BAPETEN, BRIN (Radiology Reviewer), BMKG, BNPT
4	Operation	Disdamkar, Dinkes, Dishub, Dinas Lingkungan Hidup, Dinas Pertanian, Kepolisian Wilayah, Basarnas, Kemenkes, BMKG	OPD (Disdamkar, Dinkes, Dishub, Dinas Lingkungan Hidup), TNI, Polri, Basarnas, Kemenkes, Kemenhub, KLHK, Kementan, Kemen PUPR, BPOM, KKP
5	Investigation	Polri	Polri
6	Logistics and Equipment	BPBD, Dinsos, Dinas PUPR	BNPB, Kemensos, Kemendagri, Kemen PUPR
7	Administration and Finance	BPBD, Kemendagri, Kemenkeu	BNPB, Kemendagri, Kemenkeu



# Infrastructure and Facilities in KST BJH

## ❖ Infrastructure

- Health Centers
- Crisis Room
- Temporary Evacuation Shelter
- Ambulance
- Fire Trucks
- Evacuation Vehicle

## ❖ Facility

- Health Workers
- Security Officer
- Firefighting Team



Health Workers



Ambulance



Fire Trucks



Evacuation Vehicle 11



# The Role of Implementing National Vital Objects During an Emergency

- Coordinate with the command post in determining evacuation sites
- Evacuate to the designated evacuation place
- Providing a sense of security and comfort to refugees
- Report the situation of refugees to the nuclear emergency post
- Secure the vital object area
- Coordination with related parties



# Conclusion

1. BRIN's nuclear emergency procedures refer to the National Nuclear Emergency Preparedness and Management Guidelines established by BAPETEN in 2021
2. License holder for nuclear installations, radiation facilities, and radioactive substances to prepare a Nuclear Preparedness program
3. The License Holder is obliged to participate and be responsible for implementing Nuclear Emergency Management caused by the installation/facility/activities
4. Permit Holder to organize Nuclear Emergency training and rehearsals at least 1 (one) time in 1 (one) year
5. Statement of Nuclear Emergency status and termination of Nuclear Emergency at the regional/national level based on recommendations from the Head of BAPETEN



# Thank You